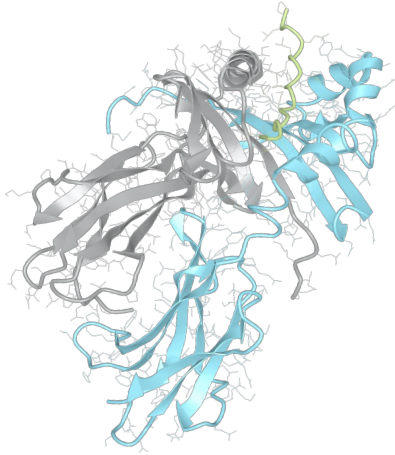


# Product datasheet



## sHLA- DRB1\*08:04bio DRA\*01:01bio

DRB1\*0804, DRB10804, DRB1\*08, DRB08, DR8  
DRA\*0101, DRA0101, DRA\*01, DRA01

<b>Serological Name</b>	DR8
<b>Peptide Load</b>	Endogenous
<b>Modification</b>	Unmodified
<b>Conjugation</b>	Biotin
<b>SKU</b>	DRB10804bio

### Product Description

<b>Allele Name</b>	<p>DRA*01:01</p> <p>DRB1*08:04</p>
<b>HLA Class</b>	HLA Class II
<b>HLA Gene Locus</b>	HLA-DR
<b>Alternative Allele Name A Chain</b>	DRA*0101, DRA0101, DRA*01, DRA01
<b>Alternative Allele Name B Chain</b>	DRB1*0804, DRB10804, DRB1*08, DRB08, DR8
<b>Description</b>	Recombinant, truncated Class II soluble Human Leukocyte Antigen (sHLA), naturally folded and glycosylated, loaded with endogenous peptides.
<b>Serological Name</b>	DR8
<b>Serological Split</b>	-
<b>Allele Frequency [World Population]</b>	
<b>A chain</b>	-
<b>B chain</b>	1.3%

### Associated products

[DRB10804](#)  
[DRB10804pe](#)

## Product Specification

<b>Product name</b>	HLA-DRB1*08:04bio
<b>HLA Species</b>	Human
<b>Host Cell Line Species</b>	Mouse
<b>Clone Designation</b>	EP309-SSC-D2
<b>Tail Specification</b>	ZP
<b>Peptide Load</b>	Endogenous
<b>Modification</b>	Unmodified
<b>Conjugation</b>	Biotin
<b>Complexity</b>	Monomer
<b>Protein Format</b>	Recombinant, truncated, zipper-stabilized, soluble, non-modified, biotinylated, endogenously loaded
<b>Storage Temperature</b>	4°C (This product should be stored undiluted)
<b>Form</b>	Liquid
<b>Concentration</b>	300.0 µg/µl
<b>Formulation</b>	PBS/0.02% Sodium Azide
<b>pH</b>	7.4
<b>Purification Method</b>	Affinity Chromatography
<b>Grade</b>	Research Use Only [RUO]
<b>Authentication Verification</b>	Sequence Based Typing

## Protein Sequences

<b>Alpha Chain Sequence</b>	<p>             IKEEHVIIQA EFYLNPDQSG EFMDFDGDGDE IFHVDMAPKE TVWRLEEFGR FASFEAQGAL              ANIAVDKANL EIMTKRSNYT PITNVPPEVT VLTNSPVELR EPNVLICFID KFTPPVVNVV              WLRNGKPVTT GVSETVFLPR EDHLFRKFHY LPFLPSTEDV YDCRVEHWGL DEPLLKHWEF              DAPSPLPETT EVDGGGGGAQ LEKELQALEK ENAQLEWELQ ALEKELAQ           </p>
<b>Beta Chain Sequence</b>	<p>             GDTRPRFLEY STGECYFFNG TERVRFLDRY FYNQEEYVRF DSDVGEYRAV TELGRPDAEY              WNSQKDFLED RRALVDTYCR HNYGVVESFT VQRRVHPKVT VYPSKTQPLQ HHNLLVCSVS              GFYPGSIEVR WFRNGQEEKT GVVSTGLIHN GDWTFQTLVM LETVPRSGEV YTCQVEHPSV              TSPLTVEWSA RSESAQSKVD GGGGAQLKK KLQALKKKNA QLKWKLQALK KKLAQ           </p>

## Related Products

[DRB10801bio](#)  
[DRB10807bio](#)  
[DRB11101bio](#)  
[DRB11501bio](#)

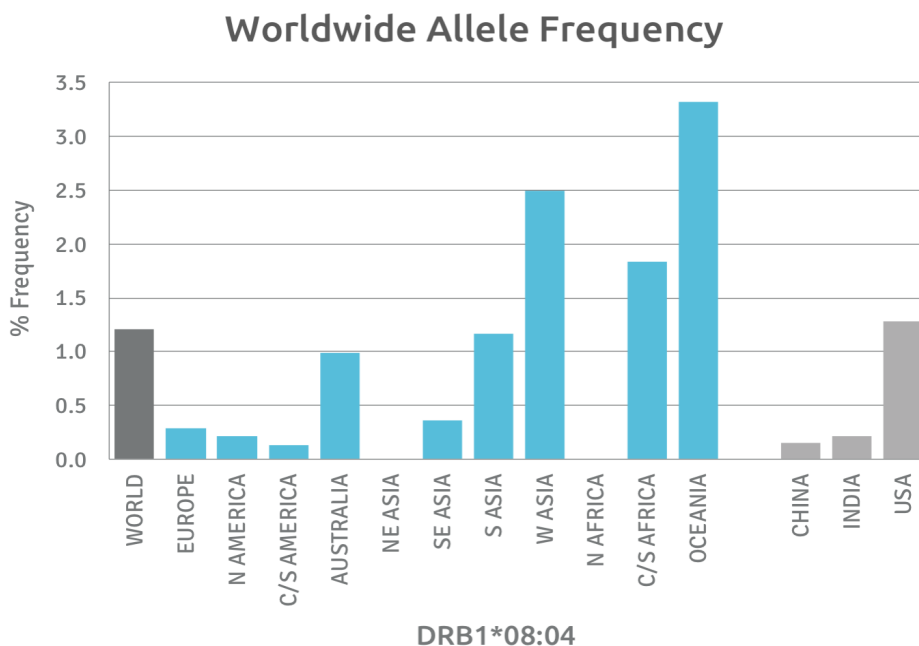
## Applications

HLA Sandwich ELISAs  
HLA Direct ELISAs  
HLA-Sera Antibody Assays  
HLA Controls in ELISA Assays  
HLA Assay Standards  
HLA Blocking Assays  
HLA Neutralizing Assays  
HLA Competition Assays  
HLA Bead Assays  
HLA Immunization Procedures

## Recommended Antibodies

L243

## Allele Frequency



Please note:

ALL PRODUCTS ARE FOR RESEARCH USE ONLY. NOT FOR COMMERCIAL USE IN DIAGNOSTIC PROCEDURES.  
For more information, please visit our Policies section on our website. For licensing inquiries, please contact

[licensing@hlaprotein.com](mailto:licensing@hlaprotein.com)

 HLA Protein  
PURE PROTEIN LLC

Eplet Assignments

DRB1\*08:04

Eplet	Polymorphic Residues	Antibody Reactivity
4R	4R	Yes
16Y	16Y25R	Yes
25R	25R	Yes
26F	26F	
28D	28D	
31F	31F	
31FY	31F32Y	
32Y	32Y	
32YN	32Y33N	
33N	33N	
37Y	37Y	
37VV	37Y38V	Yes
38V	38V	
40F	40F41D	
47Y	47Y	
47YR	47Y48R	
57D	57D60Y	
57DA	57D58A60Y	
58A	58A	
58AY	58A60Y	
60Y	60Y	
67F	67F	
70D	70D	Yes
70DA	70D73A	Yes
70DR	70D71R	
70DRA	70D71R73A	
71R	71R	
73A	73A77T	Yes
74L	70D71R73A74L	
77T	77T	Yes
77TY	77T78Y	
78Y	78Y	
85V	85V	
85VV	85V86V	
86V	86V	
96H	96H	
96HK	96H98K120S	Yes
98K	98K	
98KS	98K120S	
108P	105K108P	
112H	112H	
120S	120S	
140TV	140T142V	
149H	149H	
180V	180V	
180VTP	180V181T183P	
181T	181T	
189S	189S	